

Big solutions

## 44 CE

WATERTIGHT JUNCTION BOXES WITH HIGH CAPACITY BOTTOM

2011 Innovations

### Attention to details

The new boxes with their high capacity bottom are designed in great detail to optimise and facilitate both installation and use, allowing even large diameter conduits to be coupled. This attention to detail, combined with GEWISS' long experience, has produced a range of boxes that are ideal for systems with a wide number of connections.

### Synergy

The dimensions range from 100x100 with a height of 80mm, up to 380x300 with a height of 170mm; in addition, there are versions with a blank or transparent cover, and numerous accessories that can be used with the current boxes. A new range that distinguishes and completes the already wide choice within the 44 CE range, now with a good 19 different versions.

### Top quality and excellent performance levels

Made of top quality, halogen-free technopolymers, the new boxes guarantee a self-extinguishing degree equal to GWT 650°C, and an IP56 degree of protection. These characteristics allow the 44 CE boxes to be used in any indoor or outdoor environment, even those with a high fire risk.



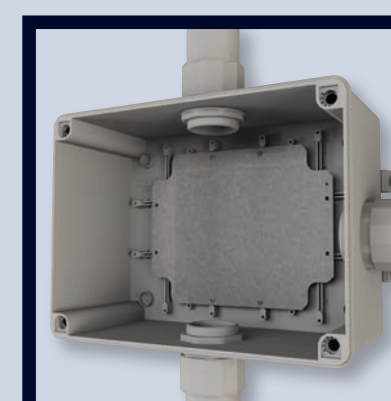
#### High capacity

The smooth walls (without ribs) make it easy to assemble conduits with diameters up to 50mm. The considerable space inside allows connections and automation equipment to be housed.



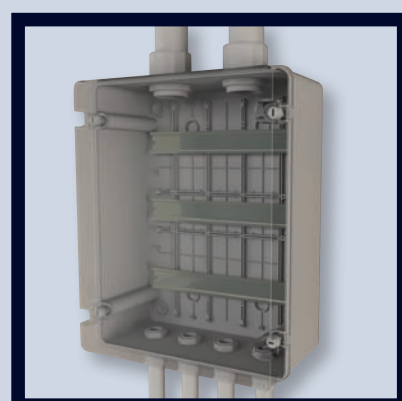
#### Multi-function screw

The innovative closure screws with their spherical head, in insulating material, allow the hinged opening of the lid without the need for any additional accessories; this facilitates both wiring and maintenance operations. What's more, the screws can be plumbed so that the boxes cannot be accessed.



#### Easy installation

The special retracted layout of the functional ribs on the back of the junction bottom makes it easier to couple any large-diameter conduits and, from size 240x190x130mm, makes it possible to fix bottom plates of even smaller size.



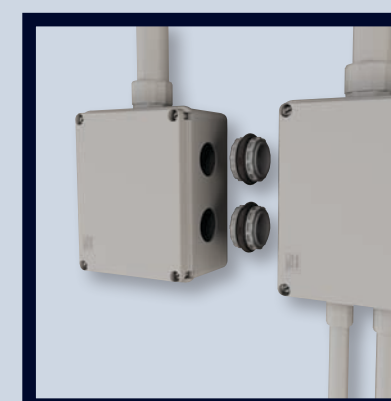
#### Versatile

The boxes can house DIN rails on the bottom, inserted both vertically and horizontally in a barycentric position; from size 240x190x130mm, up to 3 DIN rails with a 125mm step can be housed.



#### Practical and sturdy

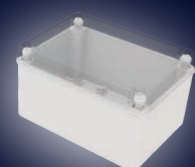
In the two largest sizes, in addition to the classic installation solutions using fixing brackets and a screw or wall plug (in all the versions), there are also special locations on the bottom for quick fixing using a "riveter".



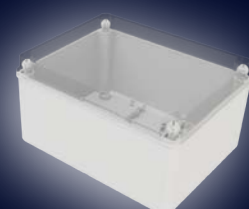
#### Modular

For all boxes with a high capacity bottom, it is possible to create both horizontal and vertical sets, thanks to the special coupling element (GW44620) that maintains their degree of protection unchanged.

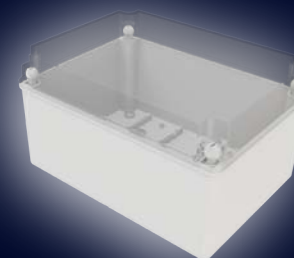
## Range



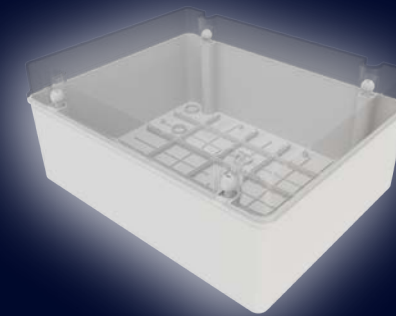
100x100x80



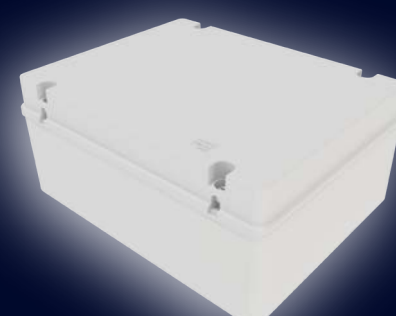
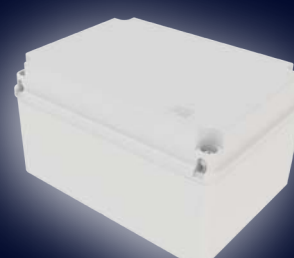
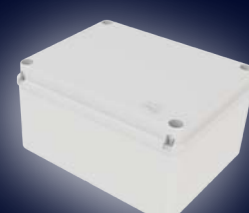
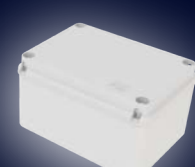
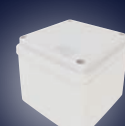
240x190x130



300x220x170

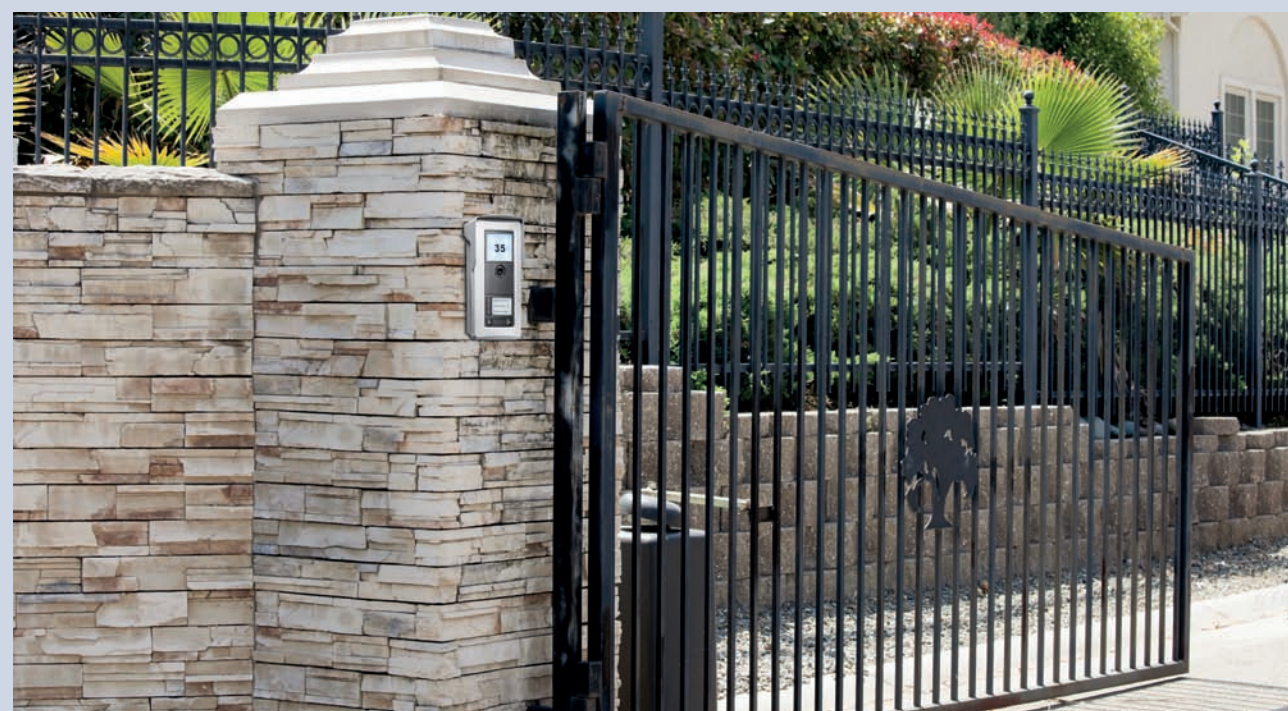


380x300x170



# The right technopolymer for every installation need

**GWPLAST 75 – GWT 650°C - with high capacity bottom for a high degree of electrification**



**GWPLAST 75 – GWT 650°C for ordinary junctions**



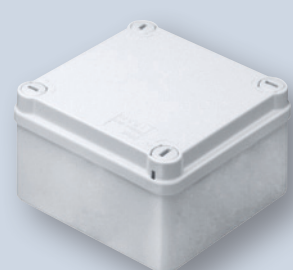
**GWPLAST 75 – GWT 960°C for special uses**



**GWPLAST 120 – GWT 650°C for industrial uses**



## The ideal version for every application



With cable glands or smooth walls and a shallow cover for junctions



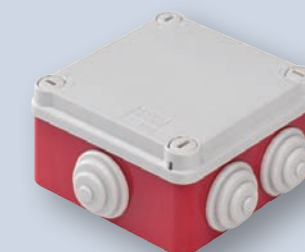
With a deep lid for command devices or non-standard equipment



With high capacity bottom for highly electrified systems



With a transparent lid for electronics and control systems



With a red bottom and a grey lid, for safety circuits

		44 CE RANGE - SURFACE-MOUNTING JUNCTION BOXES								44 CE RANGE - SURFACE-MOUNTING JUNCTION BOXES									
		GW PLAST 75								GW PLAST 75				GW PLAST 120					
Material		Thermo-pressure with ball: 85°C																	
Heat resistance		Thermo-pressure with ball: 85°C																	
Fire resistance		Glow Wire test: 650°C - UL94: HB																	
Degree of protection		IP44	IP55			IP56			IP44	IP55	IP56	IP56							
Walls		with cable glands	with cable glands	smooth	smooth			with cable glands	with cable glands	smooth	smooth								
Depth of bottom		standard	standard	standard	standard	high capacity		standard	standard	standard	standard		standard						
Lid		blank, shallow	1/4 turn screws, blank, shallow	blank, shallow	1/4 turn screws, blank, shallow	blank, shallow	blank, deep	blank, shallow	transparent, shallow	blank, shallow	1/4 turn screws, blank, shallow	blank, shallow	blank, shallow	blank + deep	blank, shallow	blank + deep	transparent, shallow	transparent, deep	
Dimensions (mm)																			
INTERNAL DIMENSIONS OF THE BOTTOM LxH (mm)	0 65	GW 44 001								GW 44 051 GW 44 051 R									
	0 80	GW 44 002								GW 44 052									
	80 x 80	GW 44 003								GW 44 053 GW 44 053 R									
	100 x 100		GW 44 024	GW 44 004	<b>GW 44 234</b>	GW 44 204	GW 44 214	<b>GW 44 114</b>			GW 44 054 GW 44 054 R		GW 44 274	GW 44 254	GW 44 404	GW 44 414			
	120 x 80			GW 44 005		GW 44 205	GW 44 215					GW 44 055	GW 44 275	GW 44 255	GW 44 405	GW 44 415			
	150 x 110		GW 44 026	GW 44 006	<b>GW 44 236</b>	GW 44 206	GW 44 216				GW 44 056 GW 44 056 R		GW 44 276	GW 44 256	GW 44 406	GW 44 416	GW 44 426	GW 44 436	
	190 x 140			GW 44 007		GW 44 207	GW 44 217	<b>GW 44 117</b>	<b>GW 44 137</b>				GW 44 057	GW 44 277	GW 44 257	GW 44 407	GW 44 417	GW 44 427	GW 44 437
	240 x 190			GW 44 008		GW 44 208	GW 44 218	<b>GW 44 118</b>	<b>GW 44 138</b>				GW 44 058	GW 44 278	GW 44 258	GW 44 408	GW 44 418	GW 44 428	GW 44 438
	300 x 220			GW 44 009		GW 44 209	GW 44 219	<b>GW 44 119</b>	<b>GW 44 139</b>				GW 44 059	GW 44 279	GW 44 259	GW 44 409	GW 44 419	GW 44 429	GW 44 439
	380 x 300			GW 44 010		GW 44 210	GW 44 220	<b>GW 44 120</b>	<b>GW 44 140</b>				GW 44 060	GW 44 280	GW 44 260	GW 44 410	GW 44 420	GW 44 430	GW 44 440
460 x 380			GW 44 011		GW 44 211	GW 44 221						GW 44 061	GW 44 281	GW 44 261	GW 44 411	GW 44 421	GW 44 431	GW 44 441	

In bold: versions with halogen-free material  
In red: versions with red back-mounting box and grey lid.  
For the dimensions, Accessory range, and further information, refer to the technical catalogue or the Internet site [www.gewiss.com](http://www.gewiss.com)

NEWS: available from June 2011